

CERTIFICATE OF LOCATION OF GOVERNMENT CORNER

NORTHEAST Corner of Section 20, Township 105, Range 42, 5TH P.M.

STATE OF MINNESOTA, County of MURRAY

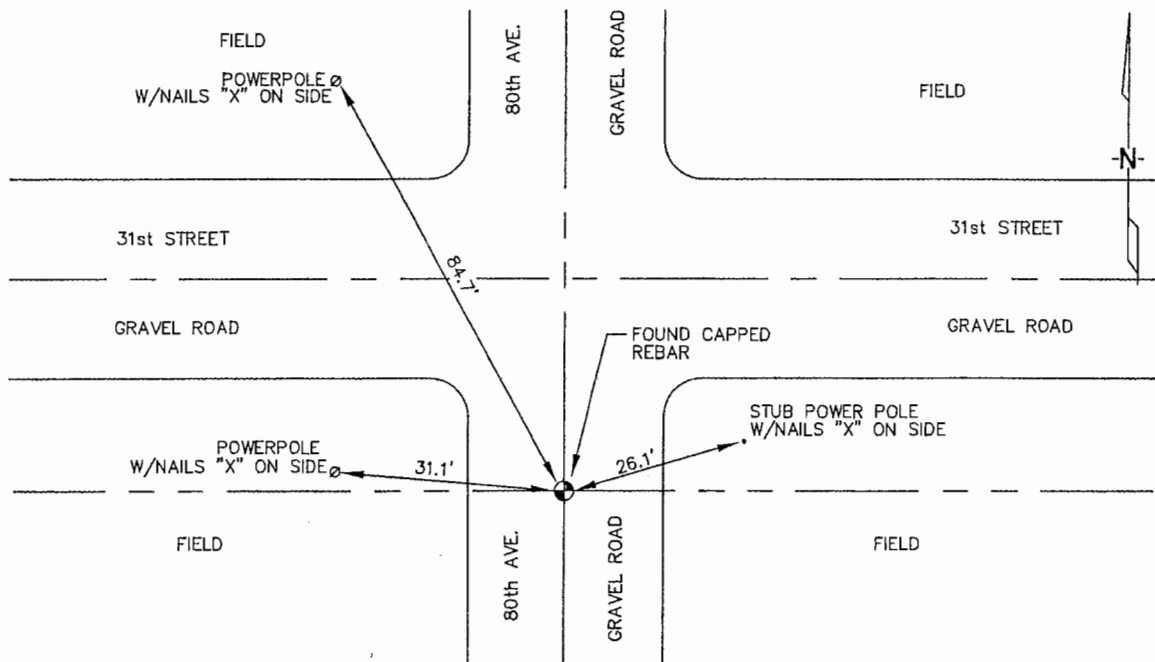
At the corner location shown on the sketch :

On 3/13/2006 found REBAR WITH AN UNREADABLE CAP.

left monument as found, lowered monument, removed monument (explain)

On _____ set _____

Sketch of reference ties



N: 659,159.53
E: 2,122,731.06
MN SOUTH, NAD 83
NOT TO SCALE

Statement of evidence relative to this corner location is on back page

I hereby certify that this document and the data contained herein was prepared by me or under my direct supervision.

Thomas V. Zeff 4/24/06
Thomas V. Zeff Date

Registration No. 44563

- Land Surveyor, Professional Engineer
- County Surveyor, County Engineer

OFFICE OF THE COUNTY RECORDER

County of _____

SEP 28 2006

I hereby certify that this document was filed in the Co. Recorders office at _____ .M. on the day of _____ A.D. , 20

County Recorder James V. Johnson
By _____, Deputy

DOCUMENT NO. _____

STATEMENT OF EVIDENCE:

NORTHEAST CORNER, SECTION 20, T. 105 N., R. 42 W.,
MURRAY COUNTY, MINNESOTA

- 1861 D.W. Wellman & S.S. Smoot, US. Deputy Surveyors,
monumented corner.
- ? Date Murray Co. found concrete monument, 6" below grade.
Ties: NW-31.3' to nail & cap on power pole;
SE-48.4' to nail & cap on brace post.
- 4/1977 Murray Co. found concrete monument 8" below grade.
Monument if 45' south from intersection.
Ties: NW-31.45' to nail & cap on power pole;
NE-41.5' to nail & cap on telephone pedestal.
- 3/13/2006 Ulteig Engineers, Inc., Survey Crew, Brian Payne Party Chief,
found a rebar with an unreadable cap, south from the intersection.
Ties: NW-84.7' to nailed "X" on power pole;
NW-31.1' to nailed "X" on power pole;
NE-26.1 to nailed "X" on stub pole.